

Tuba

One Octave Major and Minor Scales

Boltz Bands

Concert C Major

Concert C Major scale in bass clef, 4/4 time. The scale consists of eight measures: C4, C4-D4-E4-F4-G4-A4-B4, G4-F4-E4-D4-C4, C4, C4-D4-E4-F4-G4-A4-B4, G4-F4-E4-D4-C4, C4. The first and fifth measures are slurred together.

7 Concert A Minor

Concert A Minor scale in bass clef, 4/4 time. The scale consists of eight measures: A3, A3-B3-C4-D4-E4-F4-G4, G4-F4-E4-D4-C4, A3, A3-B3-C4-D4-E4-F4-G4, G4-F4-E4-D4-C4, A3. The first and fifth measures are slurred together.

13 Concert F Major

Concert F Major scale in bass clef, 4/4 time. The scale consists of eight measures: F3, F3-G3-A3-B3-C4-D4, C4-B3-A3-G3-F3, F3, F3-G3-A3-B3-C4-D4, C4-B3-A3-G3-F3, F3. The first and fifth measures are slurred together.

19 Concert D Minor

Concert D Minor scale in bass clef, 4/4 time. The scale consists of eight measures: D3, D3-E3-F3-G3-A3-B3, B3-A3-G3-F3-E3-D3, D3, D3-E3-F3-G3-A3-B3, B3-A3-G3-F3-E3-D3, D3. The first and fifth measures are slurred together.

25 Concert Bb Major

Concert Bb Major scale in bass clef, 4/4 time. The scale consists of eight measures: Bb3, Bb3-Cb3-Db3-Eb3-Fb3-Gb3, Gb3-Fb3-Eb3-Db3-Cb3, Bb3, Bb3-Cb3-Db3-Eb3-Fb3-Gb3, Gb3-Fb3-Eb3-Db3-Cb3, Bb3. The first and fifth measures are slurred together.

31 Concert G Minor

Concert G Minor scale in bass clef, 4/4 time. The scale consists of eight measures: G3, G3-A3-B3-C4-D4-E4-F4, F4-E4-D4-C4-B3-G3, G3, G3-A3-B3-C4-D4-E4-F4, F4-E4-D4-C4-B3-G3, G3. The first and fifth measures are slurred together.

37 Concert Eb Major

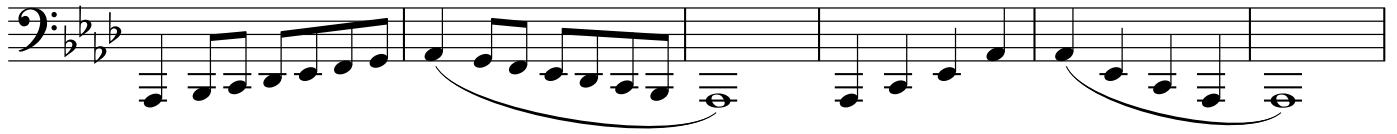
Concert Eb Major scale in bass clef, 4/4 time. The scale consists of eight measures: Eb3, Eb3-Fb3-Gb3-Ab3-Bb3-Cb3, Cb3-Bb3-Ab3-Gb3-Fb3-Eb3, Eb3, Eb3-Fb3-Gb3-Ab3-Bb3-Cb3, Cb3-Bb3-Ab3-Gb3-Fb3-Eb3, Eb3. The first and fifth measures are slurred together.

43 Concert C Minor

Concert C Minor scale in bass clef, 4/4 time. The scale consists of eight measures: C4, C4-D4-E4-F4-G4-A4-Bb4, Bb4-A4-G4-F4-E4-C4, C4, C4-D4-E4-F4-G4-A4-Bb4, Bb4-A4-G4-F4-E4-C4, C4. The first and fifth measures are slurred together.

49

Concert Ab Major



55

Concert F Minor



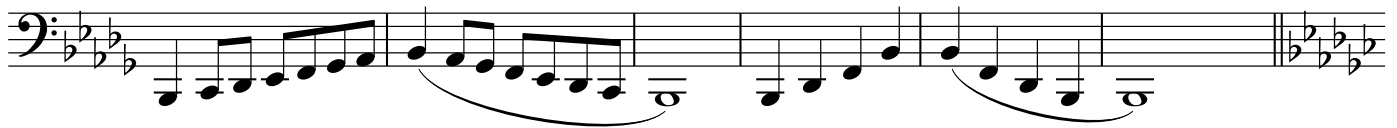
61

Concert Db Major



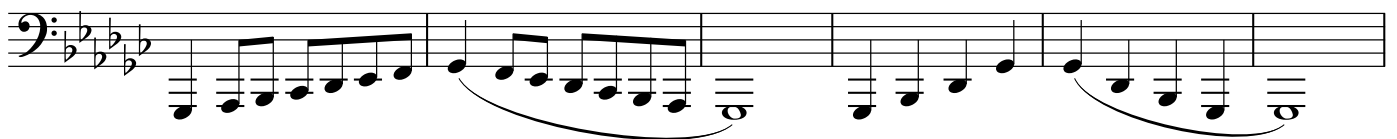
67

Concert Bb Minor



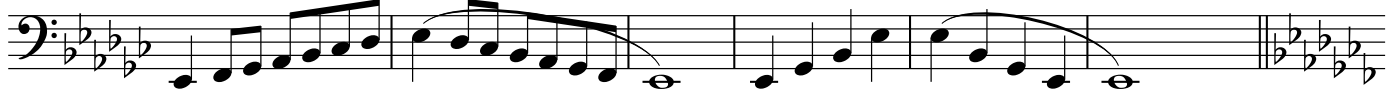
73

Concert Gb Major



79

Concert Eb Minor



85

Concert Cb Major



91

Concert Ab Minor



97 Concert G Major

Musical notation for Concert G Major, measures 97-102. The piece is in G major (one sharp) and 2/4 time. The notation is in bass clef. It features a series of eighth notes in the first four measures, followed by a half note in the fifth measure, and eighth notes in the sixth and seventh measures. There are two slurs under the eighth notes in measures 100 and 102.

103 Concert E Minor

Musical notation for Concert E Minor, measures 103-108. The piece is in E minor (no sharps or flats) and 2/4 time. The notation is in bass clef. It features a series of eighth notes in the first four measures, followed by a half note in the fifth measure, and eighth notes in the sixth and seventh measures. There are two slurs under the eighth notes in measures 105 and 107. The key signature changes to E major (one sharp) in the final measure.

109 Concert D Major

Musical notation for Concert D Major, measures 109-114. The piece is in D major (two sharps) and 2/4 time. The notation is in bass clef. It features a series of eighth notes in the first four measures, followed by a half note in the fifth measure, and eighth notes in the sixth and seventh measures. There are two slurs under the eighth notes in measures 111 and 113.

115 Concert B Minor

Musical notation for Concert B Minor, measures 115-120. The piece is in B minor (two sharps) and 2/4 time. The notation is in bass clef. It features a series of eighth notes in the first four measures, followed by a half note in the fifth measure, and eighth notes in the sixth and seventh measures. There are two slurs under the eighth notes in measures 117 and 119. The key signature changes to B major (two sharps) in the final measure.

121 Concert A Major

Musical notation for Concert A Major, measures 121-126. The piece is in A major (three sharps) and 2/4 time. The notation is in bass clef. It features a series of eighth notes in the first four measures, followed by a half note in the fifth measure, and eighth notes in the sixth and seventh measures. There are two slurs under the eighth notes in measures 123 and 125.

127 Concert F# Minor

Musical notation for Concert F# Minor, measures 127-132. The piece is in F# minor (three sharps) and 2/4 time. The notation is in bass clef. It features a series of eighth notes in the first four measures, followed by a half note in the fifth measure, and eighth notes in the sixth and seventh measures. There are two slurs under the eighth notes in measures 129 and 131. The key signature changes to F# major (three sharps) in the final measure.

133 Concert E Major

Musical notation for Concert E Major, measures 133-138. The piece is in E major (one sharp) and 2/4 time. The notation is in bass clef. It features a series of eighth notes in the first four measures, followed by a half note in the fifth measure, and eighth notes in the sixth and seventh measures. There are two slurs under the eighth notes in measures 135 and 137.

139 Concert C# Minor

Musical notation for Concert C# Minor, measures 139-144. The piece is in C# minor (four sharps) and 2/4 time. The notation is in bass clef. It features a series of eighth notes in the first four measures, followed by a half note in the fifth measure, and eighth notes in the sixth and seventh measures. There are two slurs under the eighth notes in measures 141 and 143. The key signature changes to C# major (four sharps) in the final measure.

145

Concert B Major

Musical notation for Concert B Major, measures 145-150. The key signature is B major (two sharps). The notation is in bass clef. It features a series of eighth notes in the first two measures, followed by a slur over a descending eighth-note scale in the third measure. The fourth measure contains a half note, and the fifth and sixth measures contain eighth notes with a slur.

151

Concert G# Minor

Musical notation for Concert G# Minor, measures 151-156. The key signature is G# minor (three sharps). The notation is in bass clef. It features a series of eighth notes in the first two measures, followed by a slur over a descending eighth-note scale in the third measure. The fourth measure contains a half note, and the fifth and sixth measures contain eighth notes with a slur.

157

Concert F# Major

Musical notation for Concert F# Major, measures 157-162. The key signature is F# major (three sharps). The notation is in bass clef. It features a series of eighth notes in the first two measures, followed by a slur over a descending eighth-note scale in the third measure. The fourth measure contains a half note, and the fifth and sixth measures contain eighth notes with a slur.

163

Concert D# Minor

Musical notation for Concert D# Minor, measures 163-168. The key signature is D# minor (four sharps). The notation is in bass clef. It features a series of eighth notes in the first two measures, followed by a slur over a descending eighth-note scale in the third measure. The fourth measure contains a half note, and the fifth and sixth measures contain eighth notes with a slur.

169

Concert C# Major

Musical notation for Concert C# Major, measures 169-174. The key signature is C# major (three sharps). The notation is in bass clef. It features a series of eighth notes in the first two measures, followed by a slur over a descending eighth-note scale in the third measure. The fourth measure contains a half note, and the fifth and sixth measures contain eighth notes with a slur.

175

Concert A# Minor

Musical notation for Concert A# Minor, measures 175-180. The key signature is A# minor (four sharps). The notation is in bass clef. It features a series of eighth notes in the first two measures, followed by a slur over a descending eighth-note scale in the third measure. The fourth measure contains a half note, and the fifth and sixth measures contain eighth notes with a slur.