

CBDA All State Scales Set B for 2027  
High School  
**SAXOPHONES**

**E $\flat$  Major** ♩ = 96



**C Melodic Minor** ♩ = 96



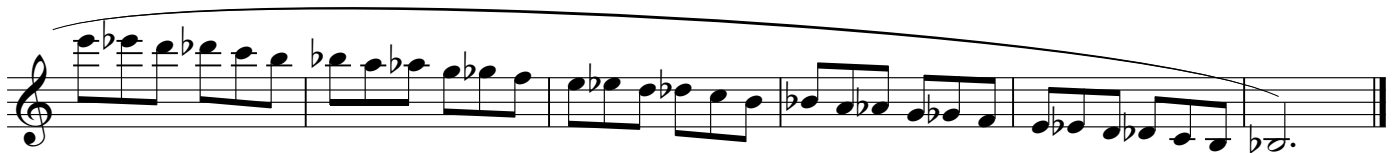
**B Major** ♩ = 96



**G# Melodic Minor** ♩ = 96



**Chromatic** ♩ = 96



\*\*Tempos for scales may be taken faster as long as it demonstrates fluency.\*\*